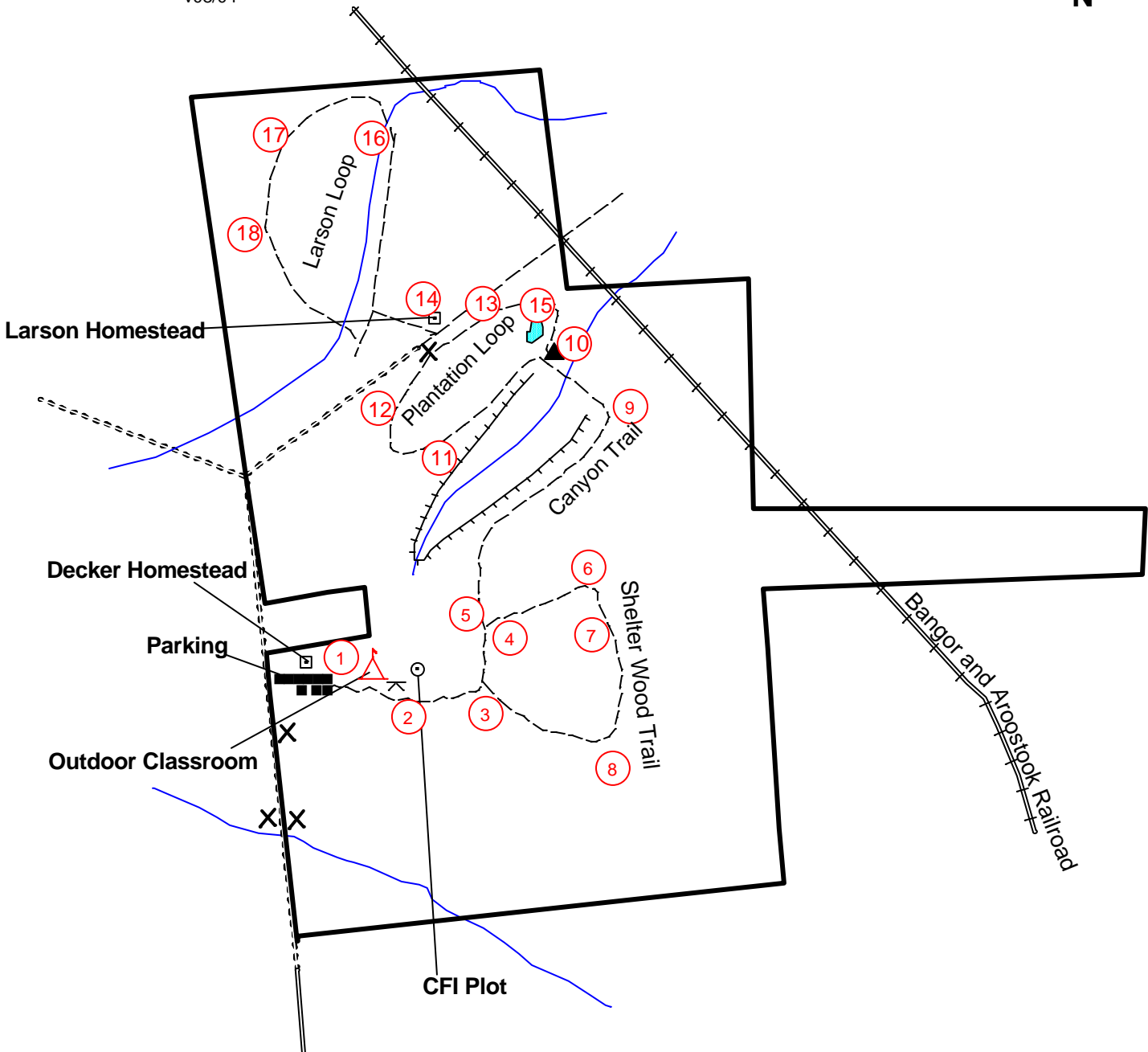


**Trails Map**



**Legend**

- Best Management Practices
- Boundary Line
- Recreation site
- Improved dirt
- Information points
- Depression contour
- Monument
- Picnic area
- 103b. Approx. trail
- 120. Multiple main line track
- 163. Small building
- Timber type line
- Vernal pool
- Stream
- Unimproved dirt
- Village or Town line

**Information Points**

- 1-Decker foundation
- 2-CFI plot
- 3-Group selection harvest
- 4-Cord of wood
- 5-Thinning harvest
- 6-Group selection harvest
- 7-Spacing saw thinning
- 8-Shelterwood harvest
- 9-Hemlock stand
- 10-Legacy Pines monument
- 11-Canyon view
- 12-Red pine plantation
- 13-Wildlife planting of old yard
- 14-Larson foundation
- 15-Vernal pool
- 16-TSI brush saw work
- 17-Late-successional forest
- 18-New forest from shelterwood harvest

**Trail Distance and Difficulty**

- Shelterwood trail - 1813 ft (easy)
- Canyon trail - 2415 ft (moderate)
- Plantation loop - 2087 ft (easy)
- Larson loop - 2588 ft (moderate)

Prepared by:

R. Kirby Ellis LPF

Scale 1 : 7920

